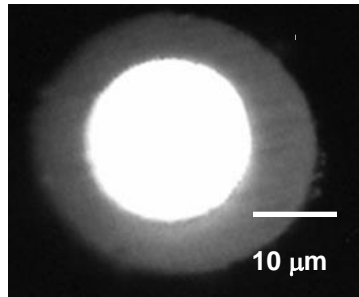


Nanoscale Imaging of Living Cells using Nano-Scanning Electrochemical Microscopy

Matsue Lab

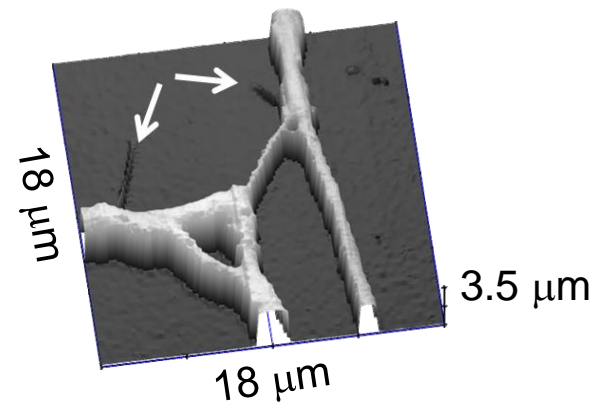
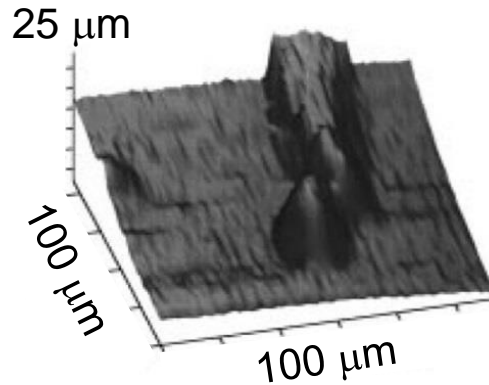
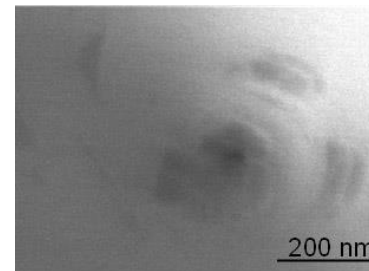
Conventional microelectrode

Diameter 20 μm

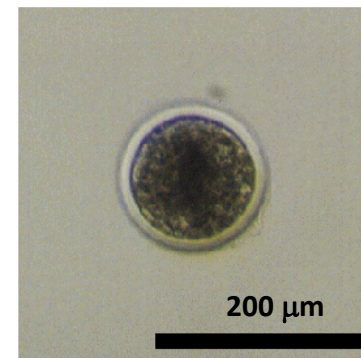
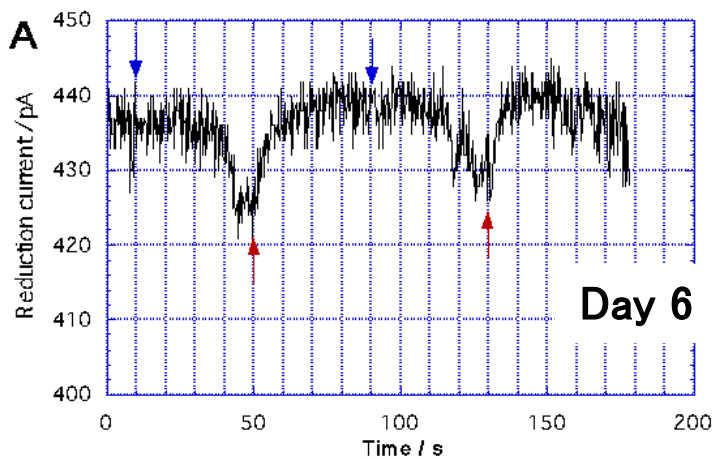
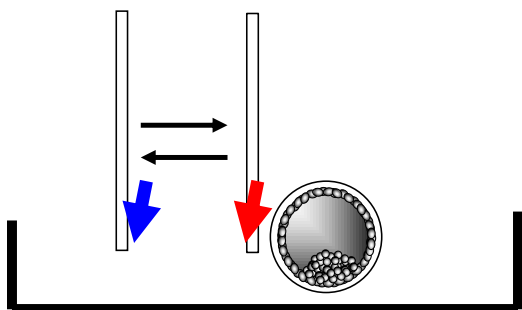


Nanoelectrode

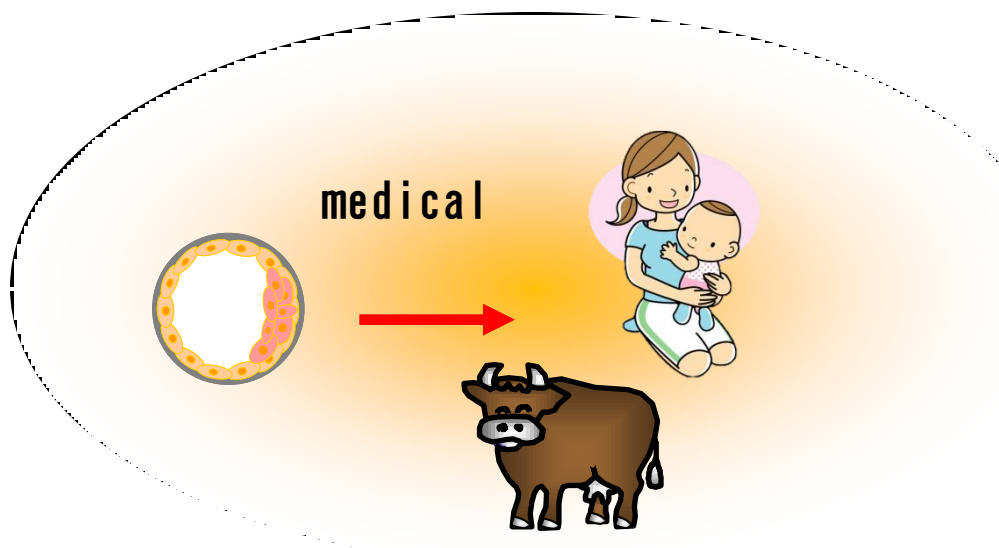
Diameter 13 nm



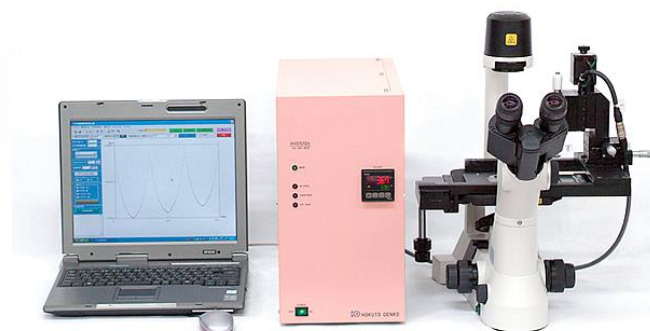
Respiration activity



Anal. Chem. 2001, 73,3751-3728 .



測定機器事業部
CLING | CRAS-1.0
sens Ing

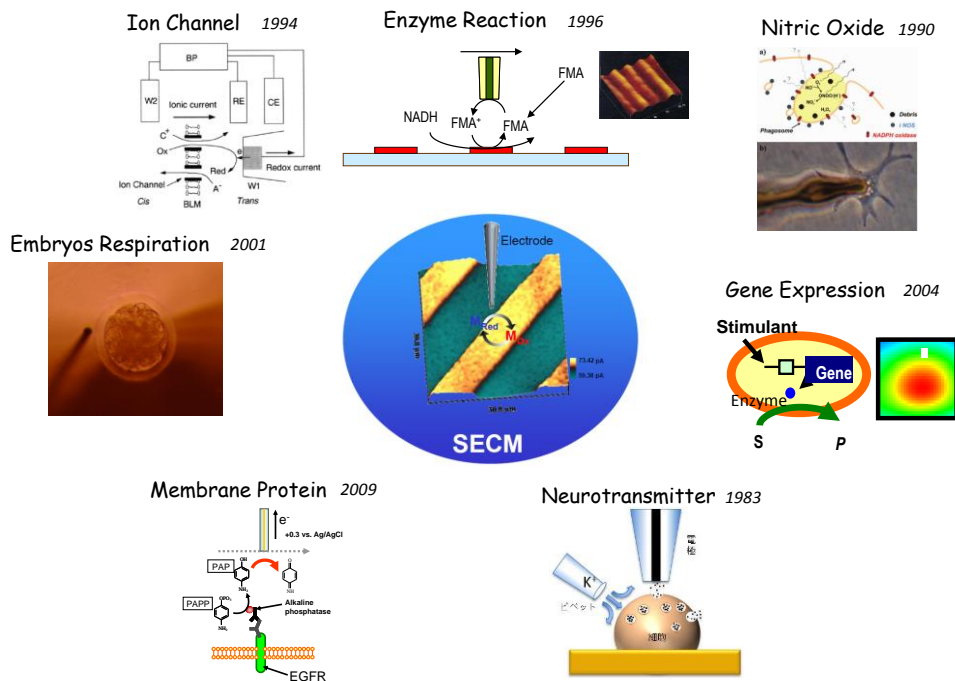


We can find good embryo without damage

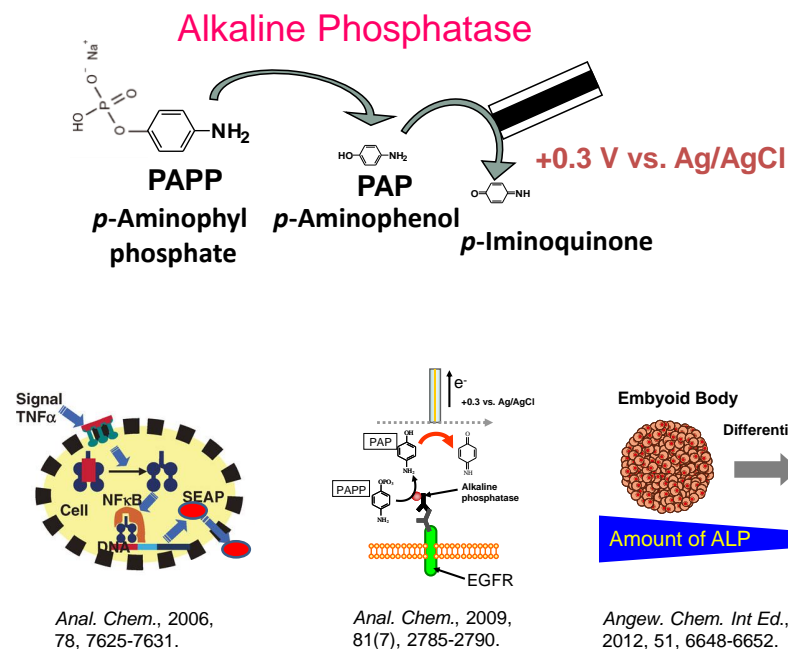
Nanoscale Imaging of Living Cells using Nano-Scanning Electrochemical Microscopy

Yasufumi Takahashi (Matsue Lab)

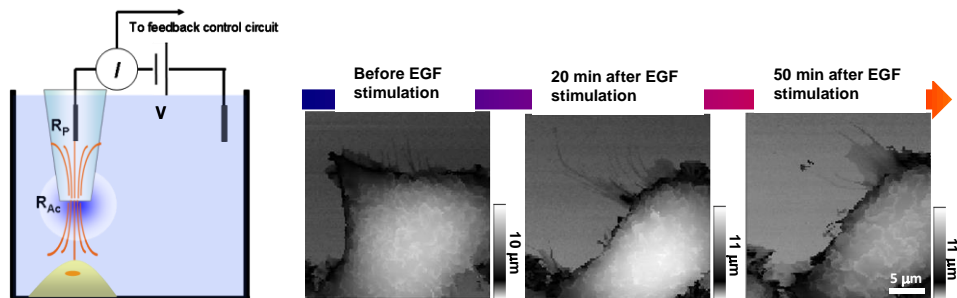
Scanning electrochemical microscope (SECM)



Living cell function measurement



Living cell Topography measurement



Battery material Topography measurement

