

# IWAKI DIECAST CO.,LTD

# 1. Overview of Iwaki Diecast

**Establishment: 1968**

**Number of employees: 320**

## **Products**

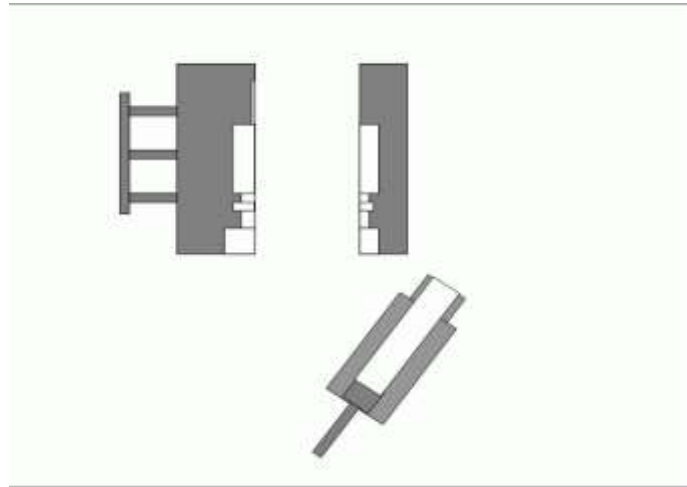
- Aluminum die-cast products
- Squeeze die-cast products produced using upright machines
- Zinc die-cast products
- Ultrahigh-speed, precise zinc die-cast products produced using dies with special structures
- Steel/stainless-steel injection molded products produced using the “Metal Injection Molding (MIM)” method

**Locations: 4 factories in Japan, 1 factory in the US**

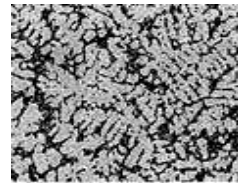
# Semi Solid Die-casting

Realize performance of **forging** by **casting**

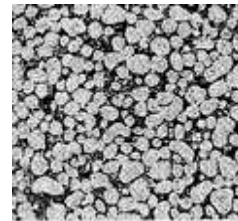
Sample of the slurry



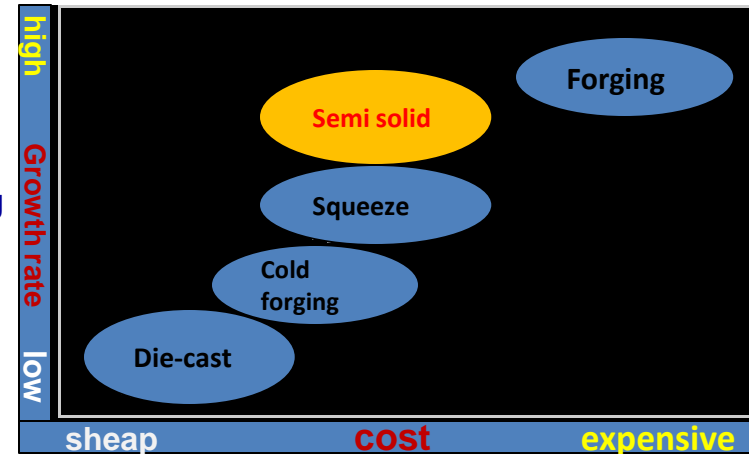
- High resisting pressure. High intensity high toughness
- Casting Die extension of life-span
- Porosity reduction
- Near net shape cast can be supplied at low cost



Squeeze die-casting



Semi Solid Die-casting



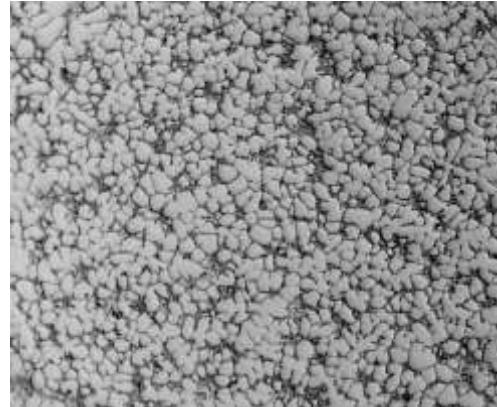
# Semi Solid Die-casting

High resisting pressure parts

## Switch from a squeeze to Semi Solid die-casting



Product picture (1800 g)



Metal structure

- Material : A C 4 C
- Characteristic : Porosity reduction  
Can be use core pin    Cost reduction



We expect the substitution to semi solid die-casting from a forge.